

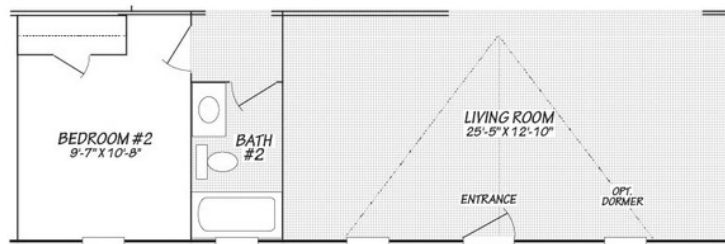
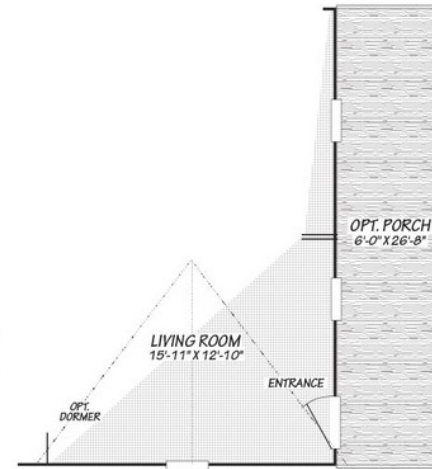
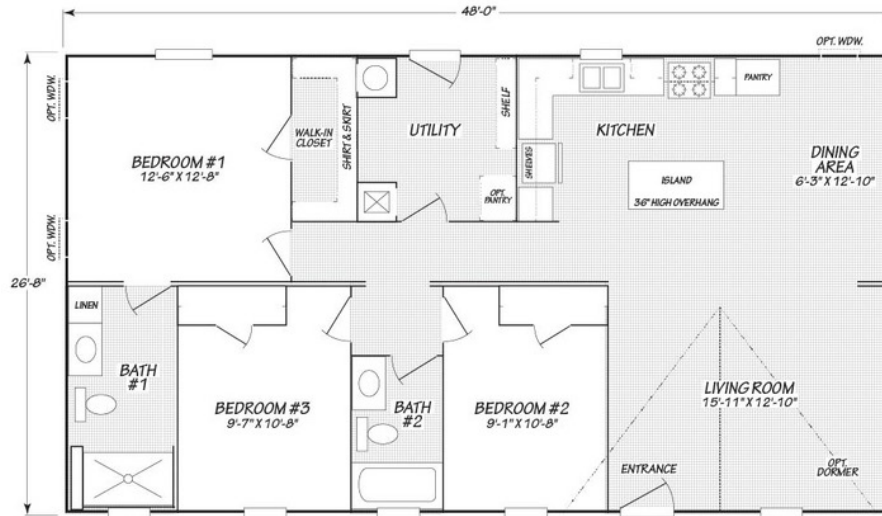
# Seneasha

Fleetwood Series

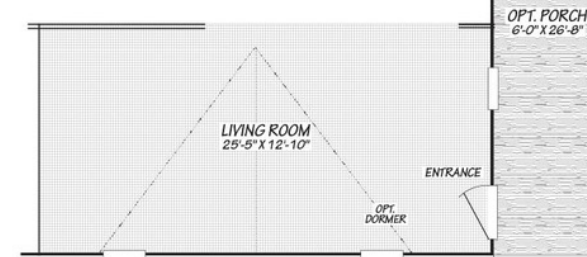
1,279 SQ. FT. (Approximate) 3 Bedroom, 2 Bath



Last Updated: 6-11-26



OPTIONAL 2 BEDROOM PLAN



OPTIONAL 2 BEDROOM PLAN W/6'-PORCH



## FACTORY SELECT HOMES

535 Highway 35 South  
Carthage, MS 39051

FactoryDirectHousing.com | 1-800-965-9278

**IMPORTANT:** Alta Cima Corp reserves the right to modify, cancel or substitute products or features of this event at any time without prior notice or obligation. Pictures and other promotional materials are representative and may depict or contain floor plans, square footages, elevations, options, upgrades, extra design features, decorations, floor coverings, specialty light fixtures, custom paint and wall coverings, window treatments, landscaping, sound and alarm systems, furnishings, appliances, and other designer/decorator features and amenities that are not included as part of the home and/or may not be available at all locations. Home, pricing and community information is subject to change, and homes to prior sale, at any time without notice or obligation. ©2020 Alta Cima Corp. All rights reserved.

MANUFACTURED BY:



I authorize Factory Select Homes to build my house, per this plan.

X \_\_\_\_\_

Customer Signature/Date